

What Will Inspire You?

Hello!

My name is Katherine Patterson – Paronto, and I am the Director of inspireU Children's Discovery Center in downtown St. Joseph, MO. On behalf of our inspireU team, I would like to thank you for your investment in our St. Joseph community and for sharing your little ones with us at the Discovery Center! I feel so lucky to be a part of this project. Since being hired in March 2024, it has been a whirlwind of events. I had the privilege of being a part of the final design choices – one of my favorites is the red carpet in our theatre space! I have hired an amazing team who all love interacting with children and adults alike—they embody the spirit of inspireU. I have the honor of working with Dr. Julie Gaddie, Mosaic Life Care Foundation President, and our centralized team of caregivers at the Foundation. Their work to bring this project into reality is truly inspiring.



It has been a dream come true to open the doors of inspireU. I am still getting to know all the wonderful people in our community. Next time you see me, please introduce yourself. I look forward to meeting you!

Please enjoy reading our inaugural inspireU e-letter. We hope to send you an update about two times per month. Keep reading to get to know inspireU a little more. You will see photos from our grand opening celebrations, upcoming programming information, and our tremendously popular birthday party rooms.

On behalf of Youie and our inspireU team,
~Katherine

Did you know? inspireU was a project undertaken by Mosaic Life Care Foundation for the last six years. Countless partners from Mosaic Health System, the City of St. Joseph, Buchanan County, corporations, organizations, and individuals helped bring inspireU to our community.

Before our official grand opening, we held a series of soft openings to thank these groups and have them be among the first to experience all our discovery center has to offer. Enjoy seeing a few photos from these events below.

inspireU Gala - Honoring Donors \$10k+



Construction Night - Honoring Construction Worker & Their Families



Friends and Family



Members and "Join the Build" Donors



St. Joseph Chamber of Commerce Ribbon Cutting



Grand Opening Day



As of February 14, 2025, we have enjoyed

826

Memberships Sold

13,598

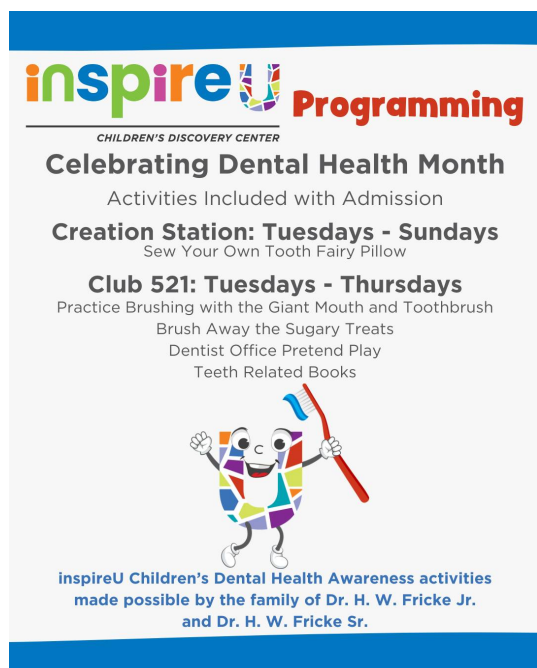
Visitors to the Discovery Center

Tickets to inspireU can be purchased both online and in person, but we highly suggest purchasing them online prior to arriving at the museum. On busier days, we may require visitors to choose their entry time.

[Memberships](#)

[Buy Tickets](#)

February is Dental Health Awareness Month at inspireU



Just like we held soft openings to train our staff and volunteers and provide good customer service to our first visitors, we have also held soft events for our educational programming.

If you have visited this month, you might have participated in a game of Animal Teeth Bingo, learned how to Sew Your Own Tooth Fairy Pillow, or read one of our featured books about teeth. If you have not visited this month, don't worry. These activities will be available throughout February in our Creation Station and Club 521.

Birthday Parties at inspireU

Looking for a birthday party location? inspireU is just the place! With two party rooms to choose from, we would love to celebrate with you.

Birthday parties include:

- Free admission to inspireU for all birthday party participants (up to 30 people depending on your party package)
- 1 hour in either the blue or yellow party room
- Access to the room 15 minutes before and after your scheduled party for setup and cleanup
- An inspireU Party Host to assist you with setup, greeting your guests, and cleanup



Blue Party Room



Yellow Party Room

[Learn More about Birthday Parties](#)

Who is inspireU?

Curious about what makes inspireU unique? As a new addition to downtown St. Joseph, Missouri, our discovery center is a state-of-the-art facility dedicated to fostering physical health, mental wellness, and educational enrichment.

[Learn More](#)

Youie's Development Tip

Did you know that children learn invaluable social skills when they have opportunities to interact with peers? Enjoy local events, volunteer opportunities, and, of course, a visit to your local children's discovery center to offer your children even more opportunities to connect. These experiences help children develop communication skills, empathy, and an understanding of their role in a large community. Plus, seeing you interact and engage with other parents in a positive way sets a strong example for them to follow!



[Our Exhibits](#)

Stay Connected

Stay connected with inspireU by following us on social media, inviting your friends and family to sign up for our newsletter, visiting the discovery center often, and leaving us a review on Google! Thank you for being a part of the inspireU family.

We'll see you next time!



inspireu.com | [Contact Us](#) |
[Donate](#) | [Volunteer](#)

inspireU Children's Discovery Center | 521 Felix St | St. Joseph, MO 64501 US

[Unsubscribe](#) | [Update Profile](#) | [Constant Contact Data Notice](#)



Try email marketing for free today!